

DMC Color List

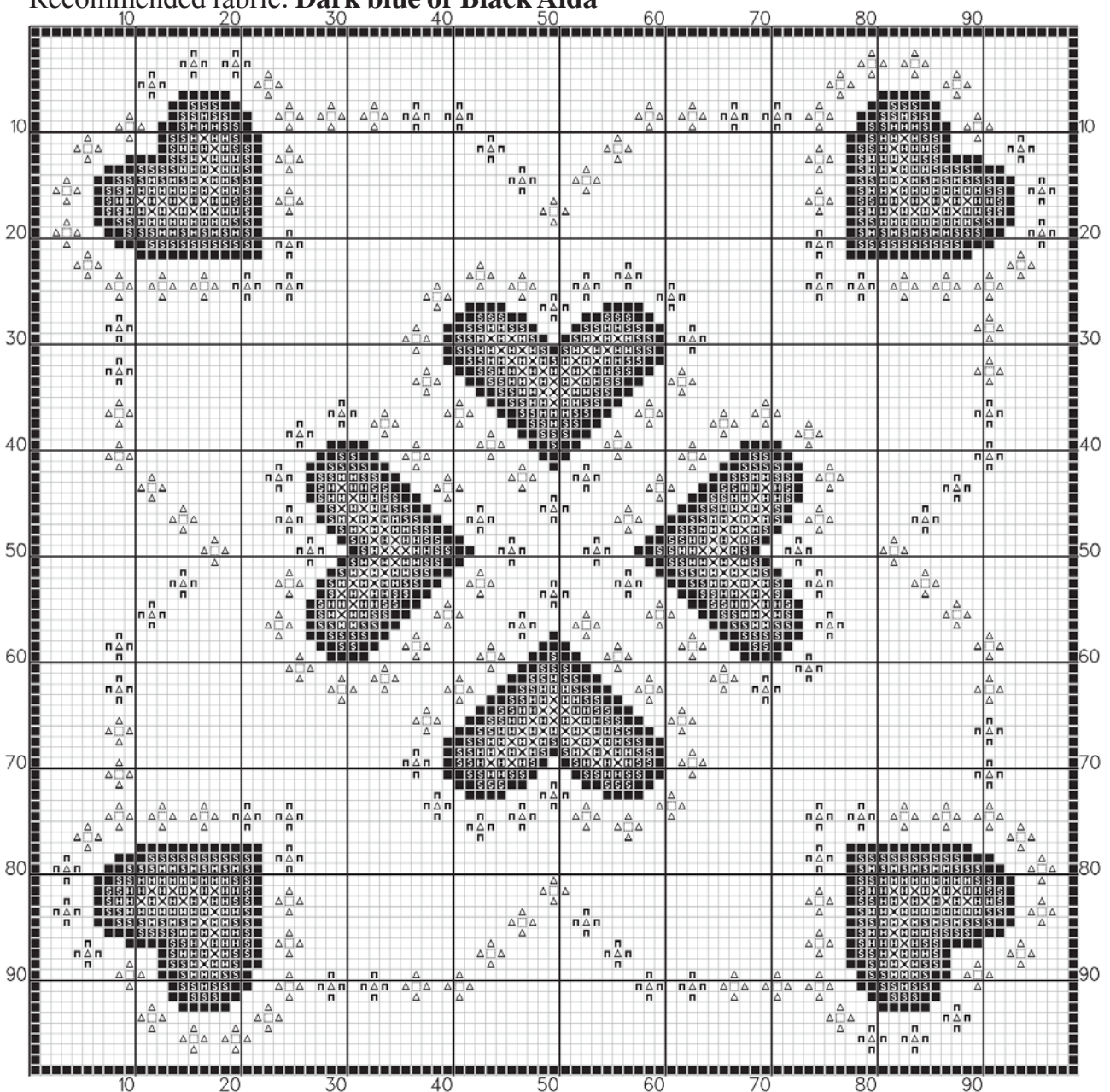
-   814
-   815
-   498
-   349
-   976
-   743
-   B5200

Design Name: **Valentine Biscornu**

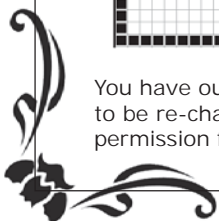
Designed by: **Stoyanka Ivanova - Solaria Gallery, 2009**

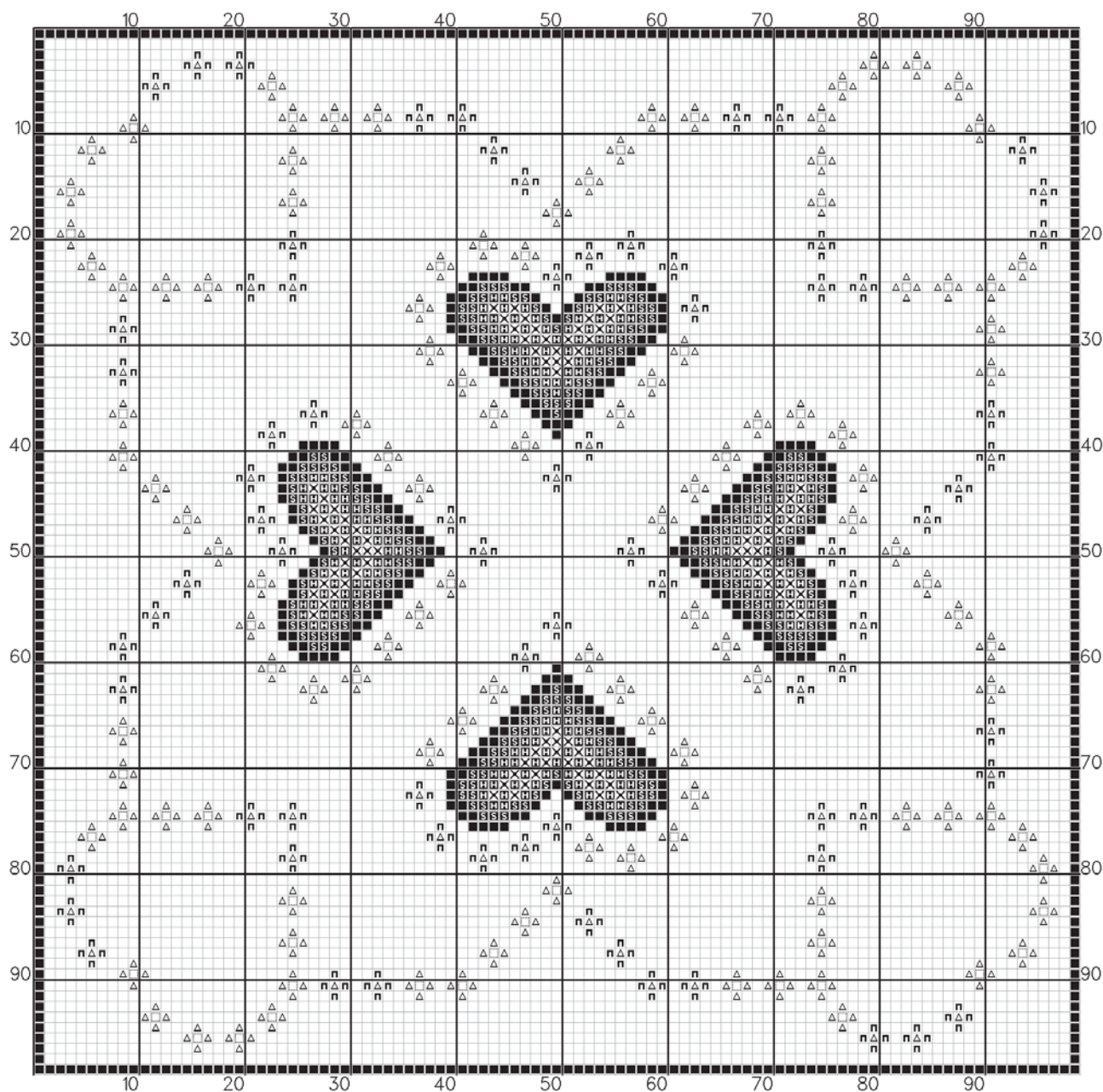
Stitch count: **99W x 197H, 7 colors**

Recommended fabric: **Dark blue or Black Aida**



You have our permission to print one copy of this chart for your personal (Non-Commercial) use only. This design is not to be re-charted, kitted, sold, modified or redistributed on paper or any other medium without the express *written* permission from The Solaria Gallery.





You can mix or substitute these 3 DMC colors with DMC Light Effects (metallic) shades:

DMC 976 - E3852 (old number 5284)

DMC 743 - with E3821 (old number 5282)

DMC B5200 - with E5200 or E168 (old number 5272 or 5283)

You have our permission to print one copy of this chart for your personal (Non-Commercial) use only. This design is not to be re-charted, kitted, sold, modified or redistributed on paper or any other medium without the express *written* permission from The Solaria Gallery.